



# SYT

**Shenyang Top New Material Co., Ltd**

**One-Stop Solution of Cobalt Alloys**

Specialist in wear resistance, corrosion resistance, and high-temperature resistance solutions.



# CONTENTS

<b>Company Introduction. Cobalt Alloy Manufacturer</b> .....	<b>01</b>
<b>High Performance Material Provider</b> .....	<b>02</b>
<b>About The Material And Properties</b> .....	<b>03</b>
<b>We Are Your Valuable Partners</b> .....	<b>04</b>
<b>Multiple Processes Are Available</b> .....	<b>05</b>
<b>Industries Served</b> .....	<b>06-30</b>
Oil & Gas Industry .....	07-08
Petrochemical Industry .....	09-10
Power Generation .....	11-12
Steel Industry .....	13-14
Wood Processing .....	15-16
Temperature Measurement Industry .....	17-18
Insulation Industry .....	19-20
Food Processing .....	21-22
Cu & Al Extruding .....	23-24
Paper & Pulp Industry .....	25-26
Extrusion Plastics .....	27-28
Other Fabricating Parts .....	29-30
<b>Production Line &amp; Inspection Equipment</b> .....	<b>31-32</b>
<b>Quality Certification</b> .....	<b>33-34</b>



# Cobalt Alloy Manufacturer

## Wear & Heat & Corrosion Solutions Components

Shenyang TOP New Material Co., Ltd is focused on solving wear, heat and corrosion problems for clients around the world since 1996. SYTOP is a professional manufacturer of cobalt alloy, metal ceramic materials, related special materials and components.

SYTOP consists on innovation and improving production ability to enhance the performance of alloys to assist customers to improve the productivity in their critical high-heat, erosion and wear environment. Over these years, we help our clients to prevent costly downtime and catastrophic failures, and achieve significant cost savings.

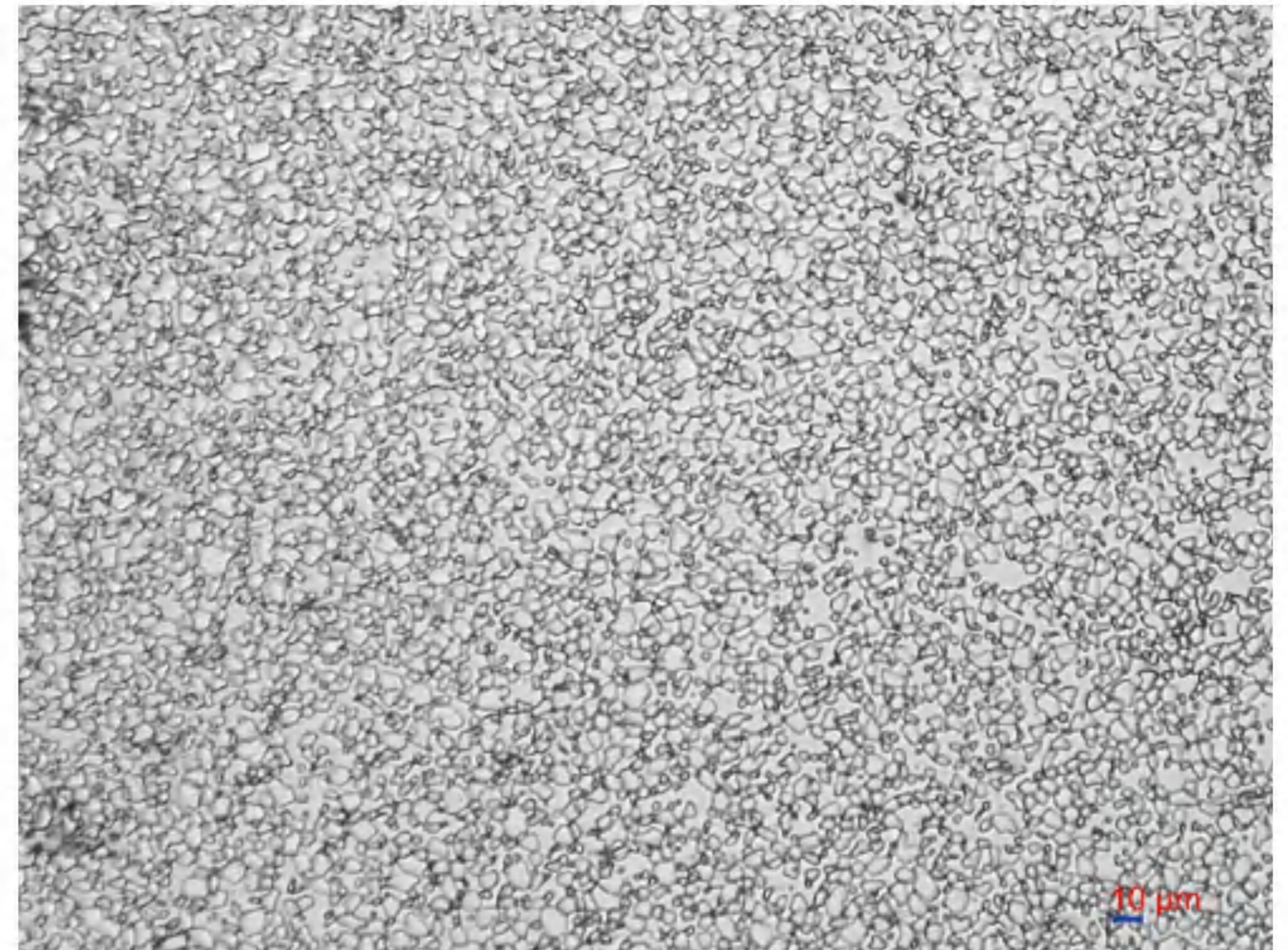
SYTOP offers a wide range of developed manufacturing processes, including powder metallurgy, casting, forging, and rolling, enabling us to meet clients' diverse needs across various industries. With years of accumulated industry experience, we are well-equipped to help customers identify and resolve various challenges that are affected by wear, corrosion and high temperature. And our development engineers can also create customized alloys specifically for you and your needs.



# High Performance Material Provider

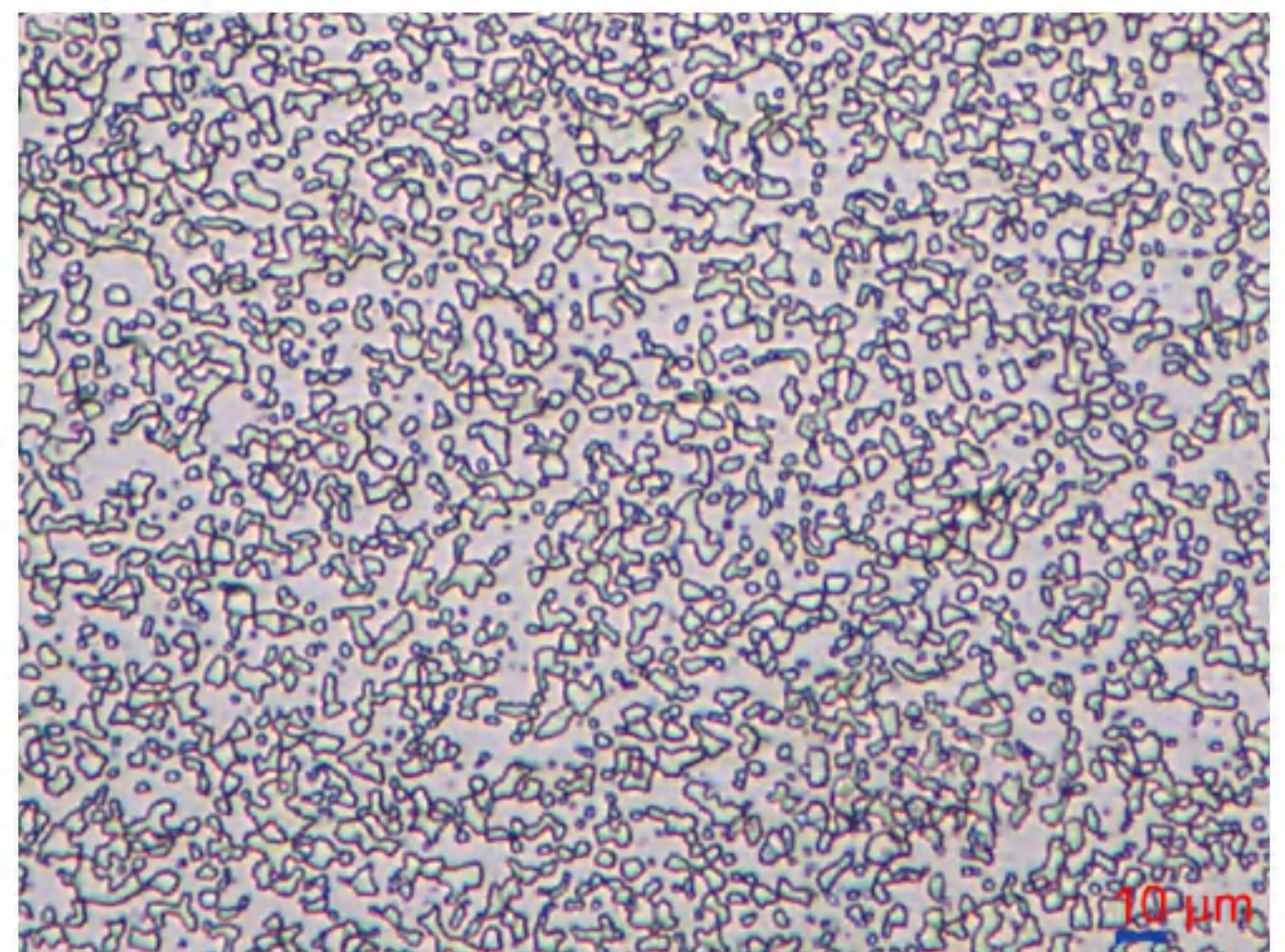
## Cobalt-Chromium-Tungsten Alloy Materials

Cobalt-chromium-tungsten alloys are cobalt-based materials enhanced with chromium, carbon, and tungsten. These alloys exhibit exceptional resistance to cavitation, corrosion, erosion, wear, and galling. They maintain their performance even at high temperatures and offer outstanding oxidation resistance. The cobalt-chromium-tungsten series includes over ten different grades, each with unique compositions and properties tailored to specific operating conditions. Our technical team can provide expert advice and solutions to help you select the most suitable material for your application.



## Cobalt-Chromium-Tungsten Alloy Materials

SYTOP consists on innovation and improving production ability to enhance the performance of alloys to assist customers to improve the productivity in their critical high-heat, erosion and wear environment. Over these years, we help our clients to prevent costly downtime and catastrophic failures, and achieve significant cost savings.



## Cermet Materials

About the cermet (ceramic-metal) materials, which are composite materials made through powder metallurgy. These materials combine the toughness, high thermal conductivity, and thermal stability of metals with the high-temperature resistance, strength, and oxidation resistance of ceramics. Cermet materials are widely used in applications that request super wear resistance, corrosion resistance and high temperature resistance but lower toughness requirements.



# Material Data :

Grade	C	Mn	Si	Cr	Ni	Mo	W	Co	Fe	Density g/cm <sup>3</sup>	Hardness HRC
ST 1	2.0-2.8	1.0 max	2.0 max	29.0-33.0	3.0 max	1.0 max	11.0-14.0	Bal.	3.0 max	8.55	51-55
ST 3	2.0-2.7	1.0 max	1.0 max	29.0-33.0	3.0 max	1.0 max	11.0-14.0	Bal.	3.0 max	8.55	51-55
ST 4	0.8-2.7	1.0 max	1.5 max	28.0-32.0	3.0 max	1.5 max	12.5-15.5	Bal.	3.0 max	8.65	40-54
ST 6	0.9-1.4	1.0 max	1.5 max	27.0-31.0	3.0 max	1.50 max	3.5-5.5	Bal.	3.0 max	8.30	38-44
ST 6B	0.9-1.4	0.5-2.0	0.2-2.0	28.0-32.0	3.0 max	1.50 max	3.5-5.5	Bal.	3.0 max	8.30	33-43
ST 6K	1.4-1.9	1.0 max	1.5 max	27.0-31.0	3.0 max	1.50 max	3.5 ~ 5.5	Bal.	3.0 max	8.30	43-47
ST 12	1.1-1.7	1.0 max	1.0 max	28.0-32.0	3.0 max	-	7.0-9.5	Bal.	3.0 max	8.40	44-49
ST 19	1.5-2.1	1.0 max	1.0 max	29.5-32.5	3.0 max	-	9.50-11.5	Bal.	3.0 max	8.45	46-51
ST 20	2.2-3.0	-	2.0 max	30.0-34.0	3.0 max	1.0 max	14.0-19.0	Bal.	3.0 max	8.70	56-60
ST 21	0.2-0.3	1.0-2.0	1.0 max	26.0-28.0	2.5 max	5.0-6.0	-	Bal.	2.5 max	8.20	27-40
ST 25	0.1 max	1.5 max	0.5 max	19.0-21.0	9.0-11.0	-	14.0-16.0	Bal.	3.0 max	8.30	20-45
ST 31	0.45-0.55	1.0 max	1.0 max	24.5-26.5	9.5-11.5	0.5 max	7.0-8.0	Bal.	2.0 max	8.60	30-35
ST 694	0.8-1.2	-	0.8-1.2	26.5-29.5	4.0-6.0	-	18.0-20.0	Bal.	3.0 max	8.70	47-51
T 400	0.1 max	-	2.5-2.7	7.5-9.5	-	27.5-29.5	-	Bal.	-	8.60	48-58
T 800	0.1 max	-	3.5 max	16.5-18.5	-	27.5-29.5	-	Bal.	-	8.20	54-62
ASTM F75	0.35 max	1.0 max	-	27.0-30.0	-	5.0-7.0	-	Bal.	-	8.1-8.4	26-30
TP80	1.5-2.2	1.0 max	1.0 max	26.0-31.0	4.0-8.0	1.0-2.0	4.50-7.00	Bal.	Nb 4.0-6.0 Cu 0.5-2.0	8.35	42-51



W3245

沈阳拓普新材料有限公司  
SHENYANG TOP NEW MATERIAL CO., LTD

我们的优势  
WHY CHOOSE US?

**司太立合金综合性能优异**  
High Performance Properties  
司太立合金优异的耐磨性、红硬性、耐腐蚀性和卓越的机械性能，是许多要求苛刻的石油和天然气磨损应用的首选材料。

**材料科学专业背景**  
Material Science Background  
我们的信心是基于我们材料科学专业背景，严格的生产和检验流程，能保证我们对产品保持关键的控制。

**多种生产工艺可选**  
Different Manufacturing Methods  
专业的司太立合金生产厂家，多种生产工艺可选，提供合适的制造方案解决您的磨损以及腐蚀方面的难题，同时由内而外的保持最高

材料选择  
MATERIAL SELECTION  
司太立合金系列  
—Cobalt Alloy Series—

牌号	成分	硬度	耐磨性	红硬性	耐腐蚀性	机械性能
司太立 3024	—	22-28HRC	1.5	1.5	1.5	1.5
司太立 3027	—	22-28HRC	1.5	1.5	1.5	1.5
司太立 3028	—	22-28HRC	1.5	1.5	1.5	1.5
司太立 3029	—	22-28HRC	1.5	1.5	1.5	1.5
司太立 3030	—	22-28HRC	1.5	1.5	1.5	1.5
司太立 3031	—	22-28HRC	1.5	1.5	1.5	1.5
司太立 3032	—	22-28HRC	1.5	1.5	1.5	1.5
司太立 3033	—	22-28HRC	1.5	1.5	1.5	1.5
司太立 3034	—	22-28HRC	1.5	1.5	1.5	1.5
司太立 3035	—	22-28HRC	1.5	1.5	1.5	1.5
司太立 3036	—	22-28HRC	1.5	1.5	1.5	1.5
司太立 3037	—	22-28HRC	1.5	1.5	1.5	1.5
司太立 3038	—	22-28HRC	1.5	1.5	1.5	1.5
司太立 3039	—	22-28HRC	1.5	1.5	1.5	1.5
司太立 3040	—	22-28HRC	1.5	1.5	1.5	1.5
司太立 3041	—	22-28HRC	1.5	1.5	1.5	1.5
司太立 3042	—	22-28HRC	1.5	1.5	1.5	1.5
司太立 3043	—	22-28HRC	1.5	1.5	1.5	1.5
司太立 3044	—	22-28HRC	1.5	1.5	1.5	1.5
司太立 3045	—	22-28HRC	1.5	1.5	1.5	1.5
司太立 3046	—	22-28HRC	1.5	1.5	1.5	1.5
司太立 3047	—	22-28HRC	1.5	1.5	1.5	1.5
司太立 3048	—	22-28HRC	1.5	1.5	1.5	1.5
司太立 3049	—	22-28HRC	1.5	1.5	1.5	1.5
司太立 3050	—	22-28HRC	1.5	1.5	1.5	1.5

司太立合金  
COBALT ALLOYS

耐磨&耐腐蚀&耐高温材料源头厂家  
Wear & Corrosion & High temperature problem one-stop



钻井 & 勘探  
DRILLING AND EXPLORATION



固体控制：离心机  
SOLIDS CONTROL: DECANTER CENTRIFUGE



服务5000+客户



司太立合金  
在石油天然气领域的应用

Cobalt Alloy provides a comprehensive range of erosive wear solutions for critical MW applications



出口80+国家和地区

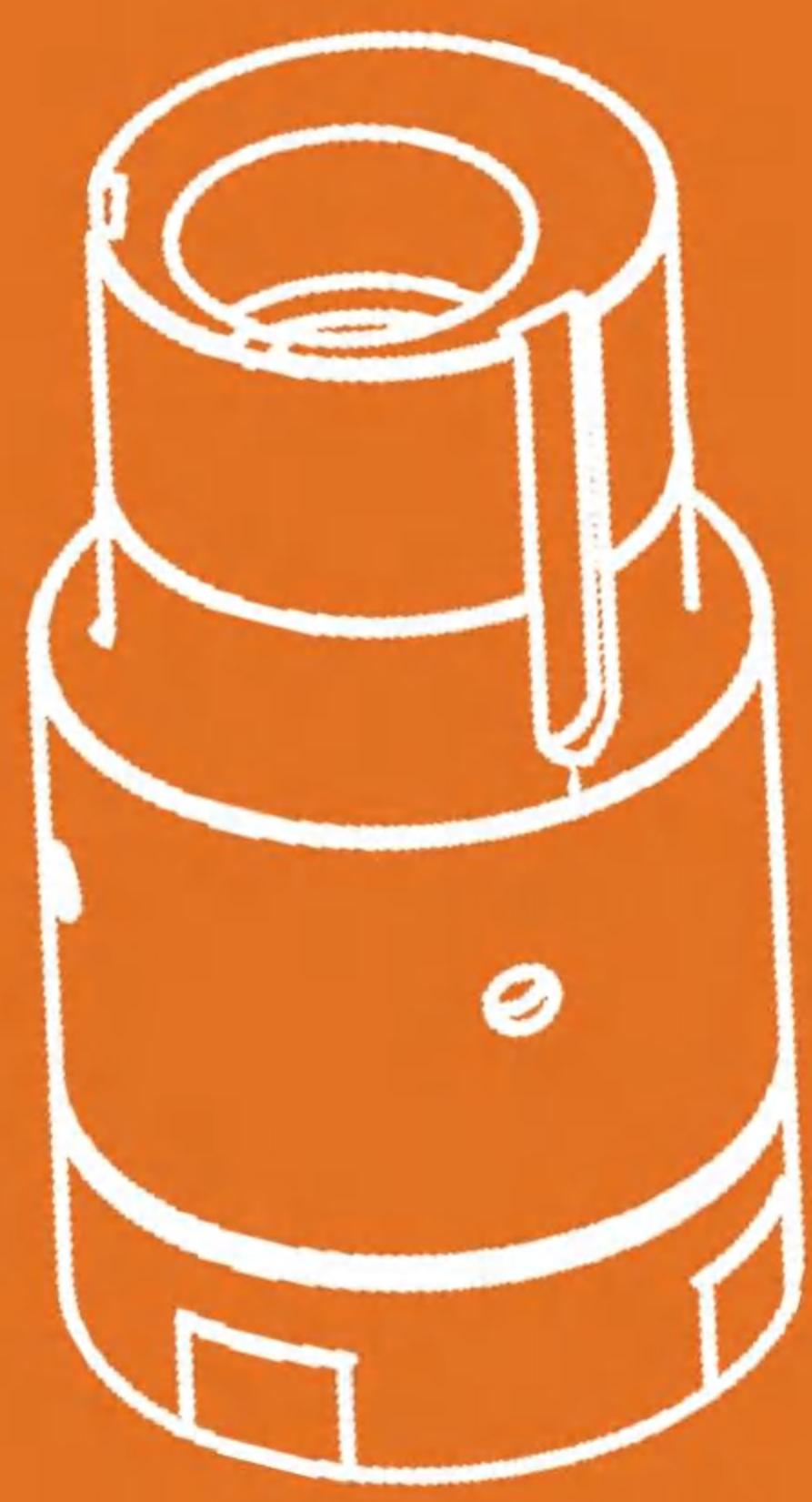


СТЕЛЛИТ

PRODUCTION  
生产



生产加工检验



We Are Your Valuable Partners


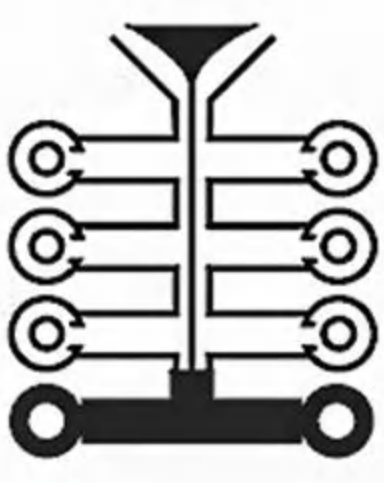

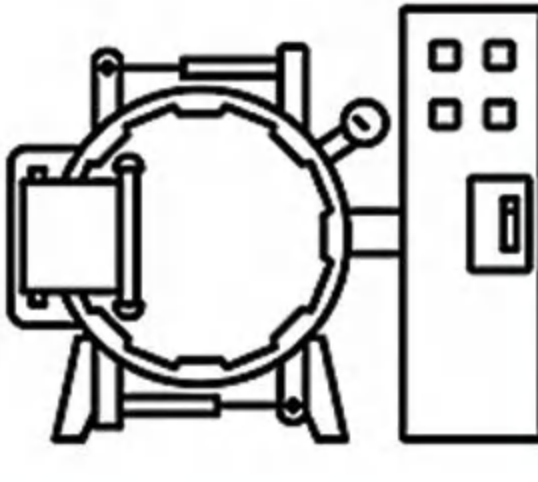


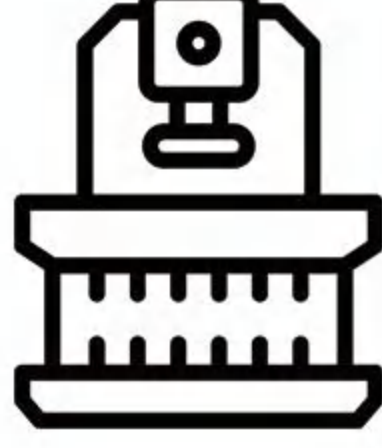


High performance cobalt alloy suppliers provide you with one-stop service

Expertise In Material Science And Extensive Experience

The founding team and operators at SYTOP all have backgrounds in materials science-related fields. Over the years, we've developed strong collaborations with renowned universities like the Chinese Academy of Sciences Institute of Metal and Northeastern University. This allows us to rigorously control the quality of raw materials and the entire production process. Additionally, our focus on material innovation enables us to respond effectively to the ever-changing demands of the market and the environment.

# Multiple Processes Are Available

A dependable production process is crucial to product performance, SYTOP offers products manufactured using various processes such as powder metallurgy, casting, forging, rolling, surface coating, and hard-facing, tailored to meet the specific needs of our customers' products and applications. This not only meets our quality requirements but also maximizes cost savings.

 <p><b>Powder Metallurgy</b></p>	 <p><b>Investment Casting</b></p>	 <p><b>Rolling</b></p>
 <p><b>Vacuum Casting</b></p>	 <p><b>Centrifugal Casting</b></p>	 <p><b>Sand Casting</b></p>
 <p><b>Forging</b></p>	 <p><b>Machining</b></p>	 <p><b>Cladding &amp; Finishing</b></p>

## Customized Product Solutions

Typically equipment encounters issues with wear and on occasion is subjected to high temperatures and corrosion. However, our primary focus is on addressing the challenges you face in your day-to-day usage and resolving them. By collaborating with clients from various countries and diverse operational environments, we not only deliver products that meet your specifications and requirements but also utilize our expertise in materials and manufacturing processes to develop bespoke solutions tailored to your needs.



# The Service Industries And Products

# Industries Served

## Oil & Gas Industry

In directional drilling, cobalt alloy components like MWD/LWD sensor housings ensure data accuracy in high-temperature formations while resisting sour gas degradation. For solids control, cobalt alloy coated decanter centrifuge augers (HRC 55+) withstand abrasive drilling fluids, tripling service life and slashing maintenance by 40%. API pump seal rings made from cobalt alloys prevent sand-induced erosion, maintaining sealing integrity under thermal cycling.



**Cage**



**Flow Diverters**



**Nozzle Sleeves**



**Turbine Rotors**



**Stator**



**Mounting Plates**



**Deflector**



**Turbine Stators**



# Industries Served

## Petrochemical Industry

Equipment and components in the petrochemical industry operate in extremely harsh environments, often exposed to highly corrosive fluids or solid-liquid mixtures. These conditions can significantly reduce operational efficiency and equipment lifespan, leading to increased frequency and duration of downtime for maintenance. Cobalt-based alloys, with their exceptional wear resistance, corrosion resistance, and high-temperature performance, provide an effective solution to address issues such as corrosion, wear, and thermal degradation, helping customers minimize downtime and enhance operational reliability.





**Feed Nozzle**



**Bushing**



**Nozzle Sleeves**



**DeNox Nozzle**



**Spray Nozzle**



**Diffuser**



**Sleeve**



**Blow Head**

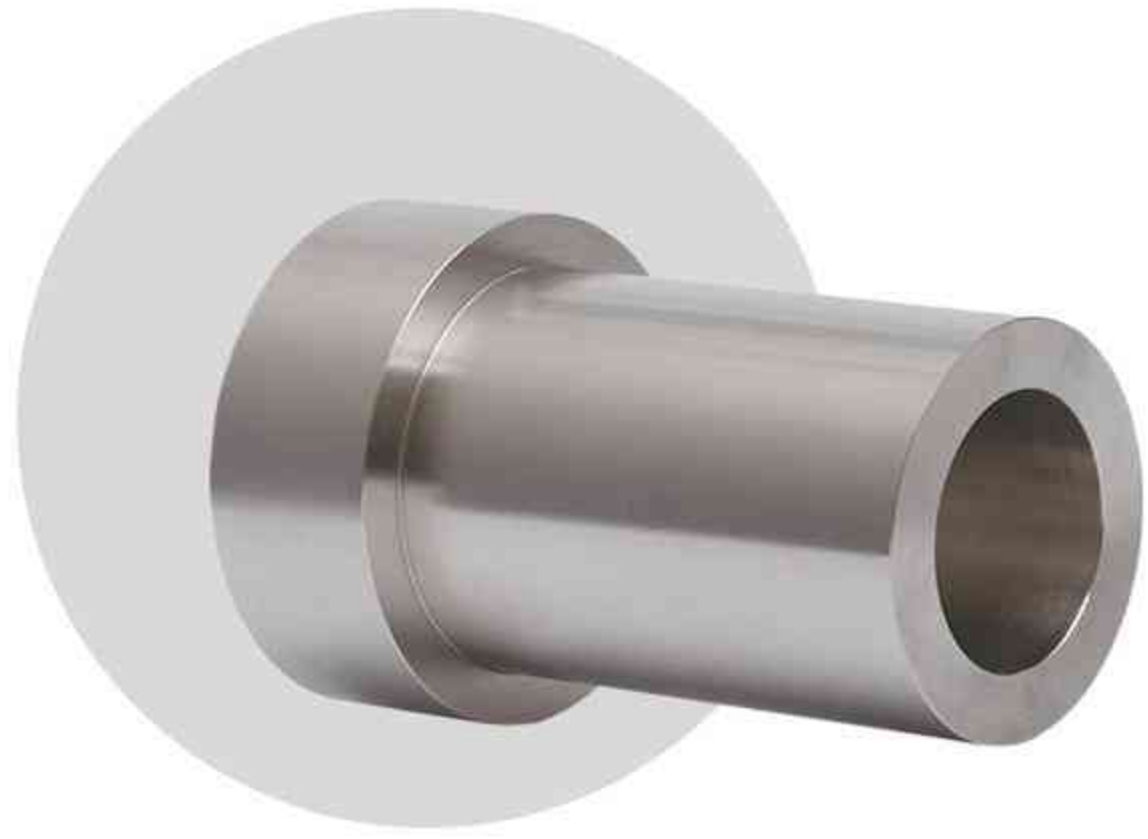
# Industries Served

## Power Generation

Cobalt-based alloys are widely used in the power generation industry. We specialize in supplying products for industrial gas turbines, including blades, vanes and structural combustor parts. In both conventional and nuclear power plants, steam turbines utilize various control valves within the hot steam path. These components are subjected to extreme conditions, including high temperatures, corrosion, and erosion, which can significantly impact their performance and lifespan.



**Bushing**



**Erosion Shield**



**Sleeve**



**Bearing**



**Bushing**



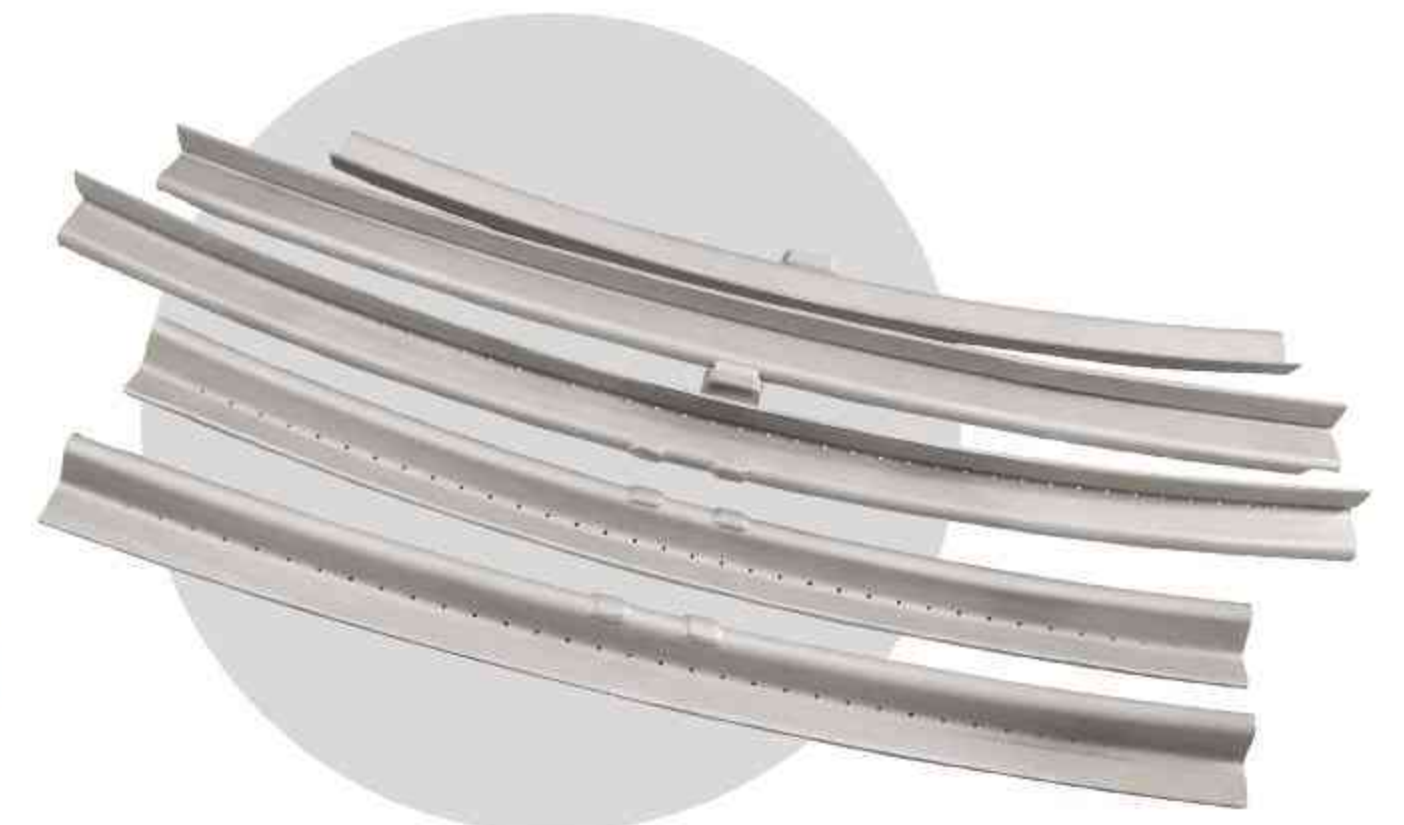
**Bearing**



**Sleeve**



**TP Seal**



## Industries Served

### Steel Industry

Galvanizing production lines are widely used in the production of steel plates in steel mills, especially steel plates supplied to automobiles and household appliances. Due to its special production environment, the galvanizing production line has very high requirements for some accessories immersed in the zinc solution, which requires high temperature resistance, corrosion resistance and wear resistance at the same time. The typical products are sinking roller bushing, stabilizer sleeve, scraper and propeller, different dimensions are available upon requests.





**Scraper**



**Propeller**



**Segment**



**Stablized Roller Sleeve**



**Stablized Roller Sleeve**



**Sink Roll Sleeve**



**Shaft Sleeve**



**Stopper**

# Industries Served

## Wood Processing

SYTOP manufacture different sizes welding rods and sintered tips of cobalt alloy, compatible with all kinds of tippers such as Wright, Armstrong, and Iseli. The service life of the band saw and circular saw blades can be considerably improved by covering the tooth tips with cobalt alloy.

It will enhance the blades performance and its lifespan, especially cutting the hard woods such as some exotic wood species of Africa and Southeast Asia, but in recent years it has also proved successful for machining soft wood such as fir and spruce, some kind of wet woods and frozen woods, oiled timber, red cedar and birch.

We maintain a full inventory of all sizes to match your require. Beyond preformed cobalt alloy, we also can made upon your special design and rod-length materials. Whatever your saw tipping needs, we've got you covered.





**Saw Tips (Rectangle)**



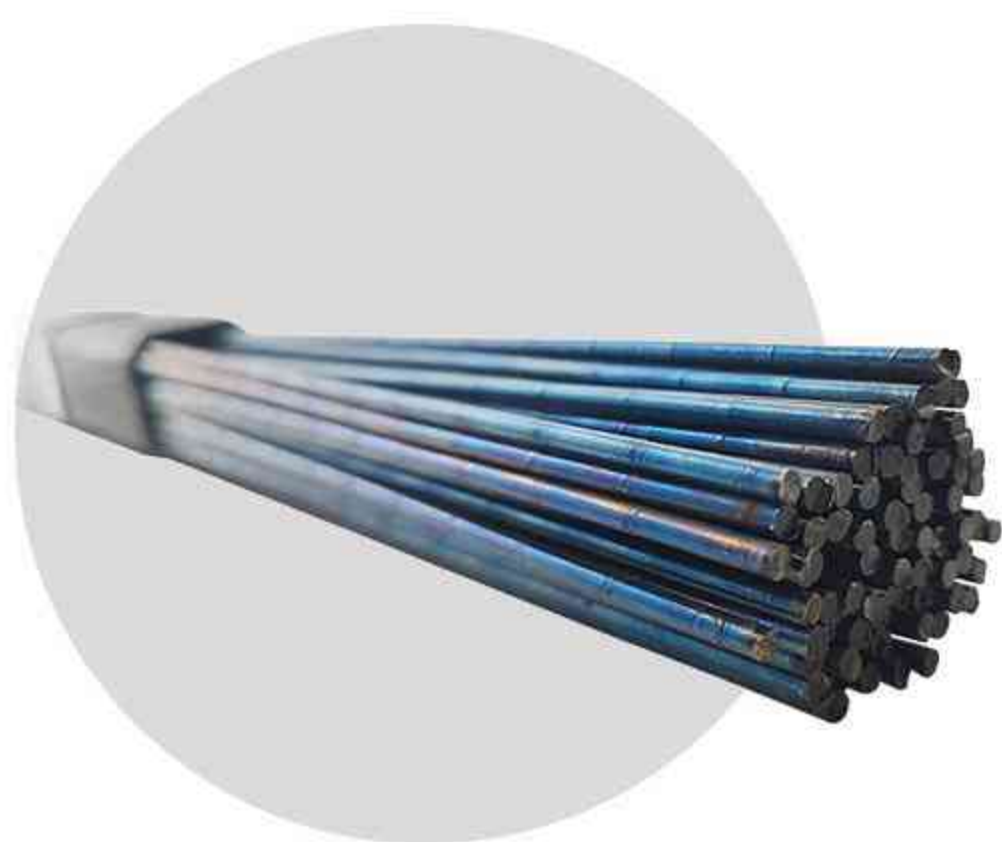
**Saw Tips (Triangle)**



**Saw Tips (European Style)**



**Saw Tips (Profiled)**



**Welding Rods**



**Saw Tips (Rounded)**



**Welding Rods**



**Dense Welding Rods**

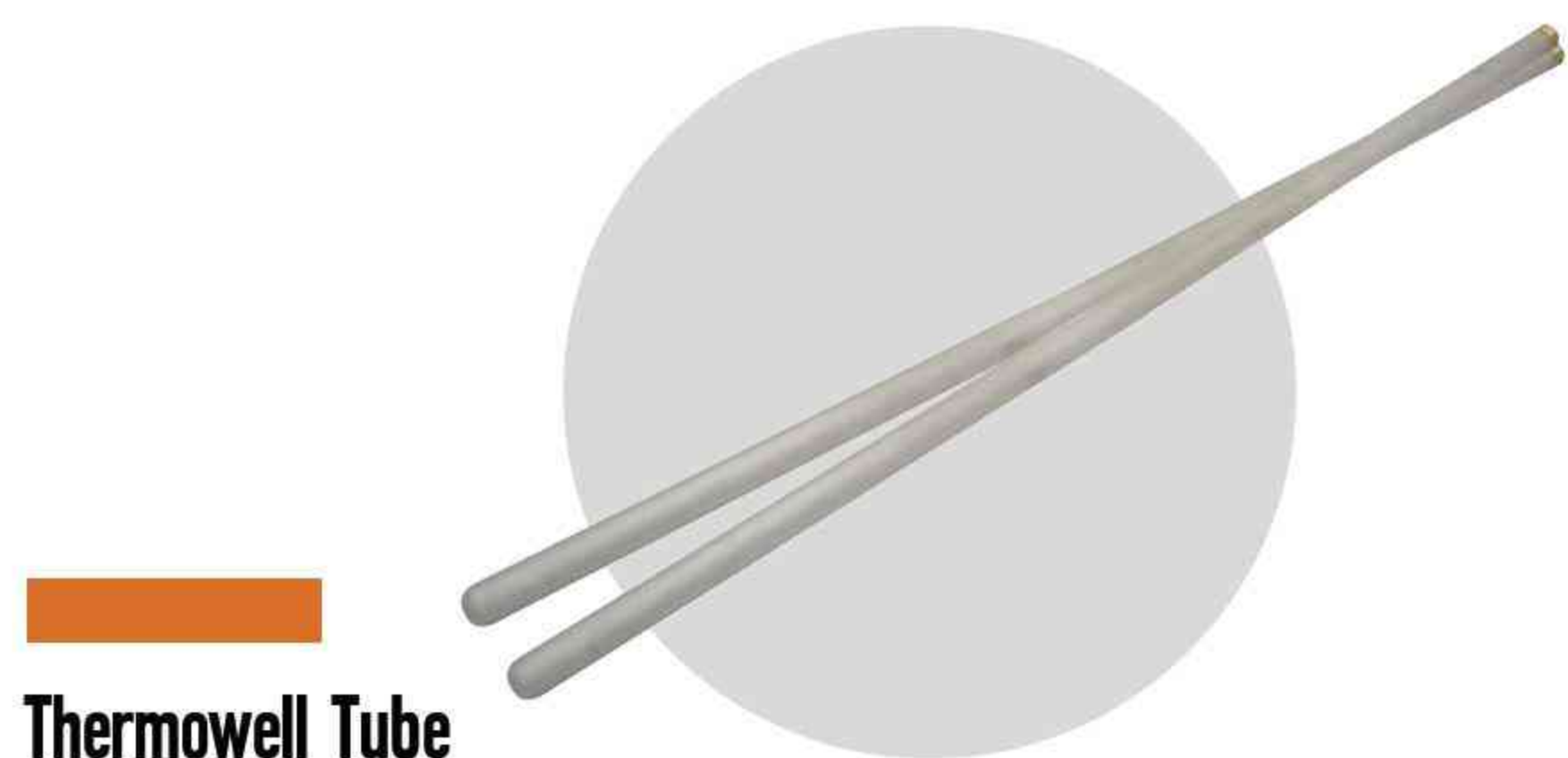
# Industries Served

## Temperature Measurement Industry

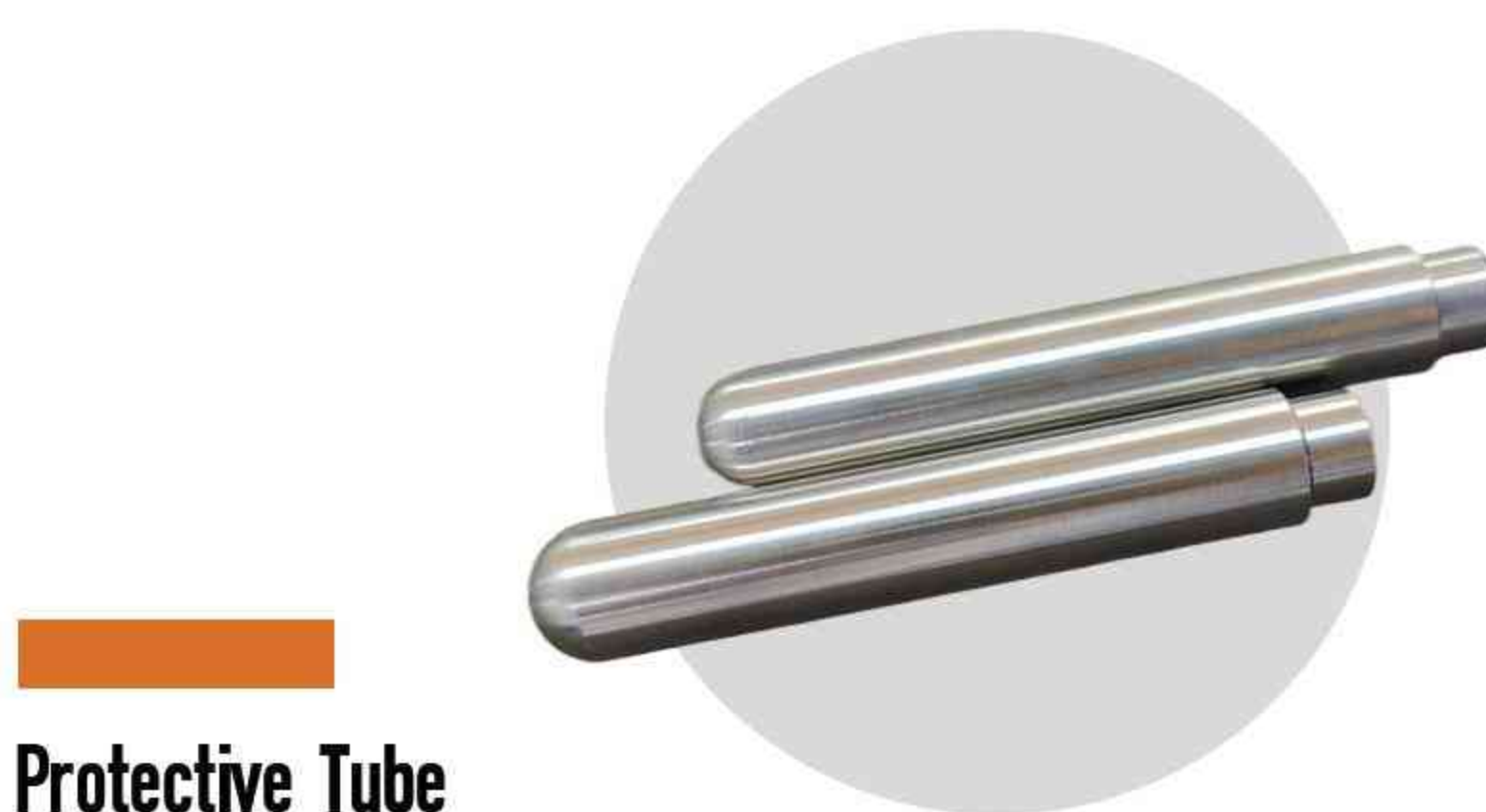
Cobalt alloy maintain their strength and stability even at extreme temperatures, making them ideal for high-temperature environments. Cobalt-based alloy thermocouple protection tubes are widely used in temperature measurement applications in power plants and cement plants. These environments demand exceptional high-temperature wear resistance, as well as the ability to withstand erosion and corrosion from various particulates. To optimize cost-efficiency and extend service life, we typically offer solutions that combine standard metal materials with cobalt-based alloys through welding.

Another kind of metal ceramic tube are widely used to test the temperature when melting nickel and cobalt alloy. Both of them can help customers control costs, reduce replacement frequency, and enhance overall operational reliability.





**Thermowell Tube**



**Protective Tube**



**Thermowell Tube**



**Protective Tube**



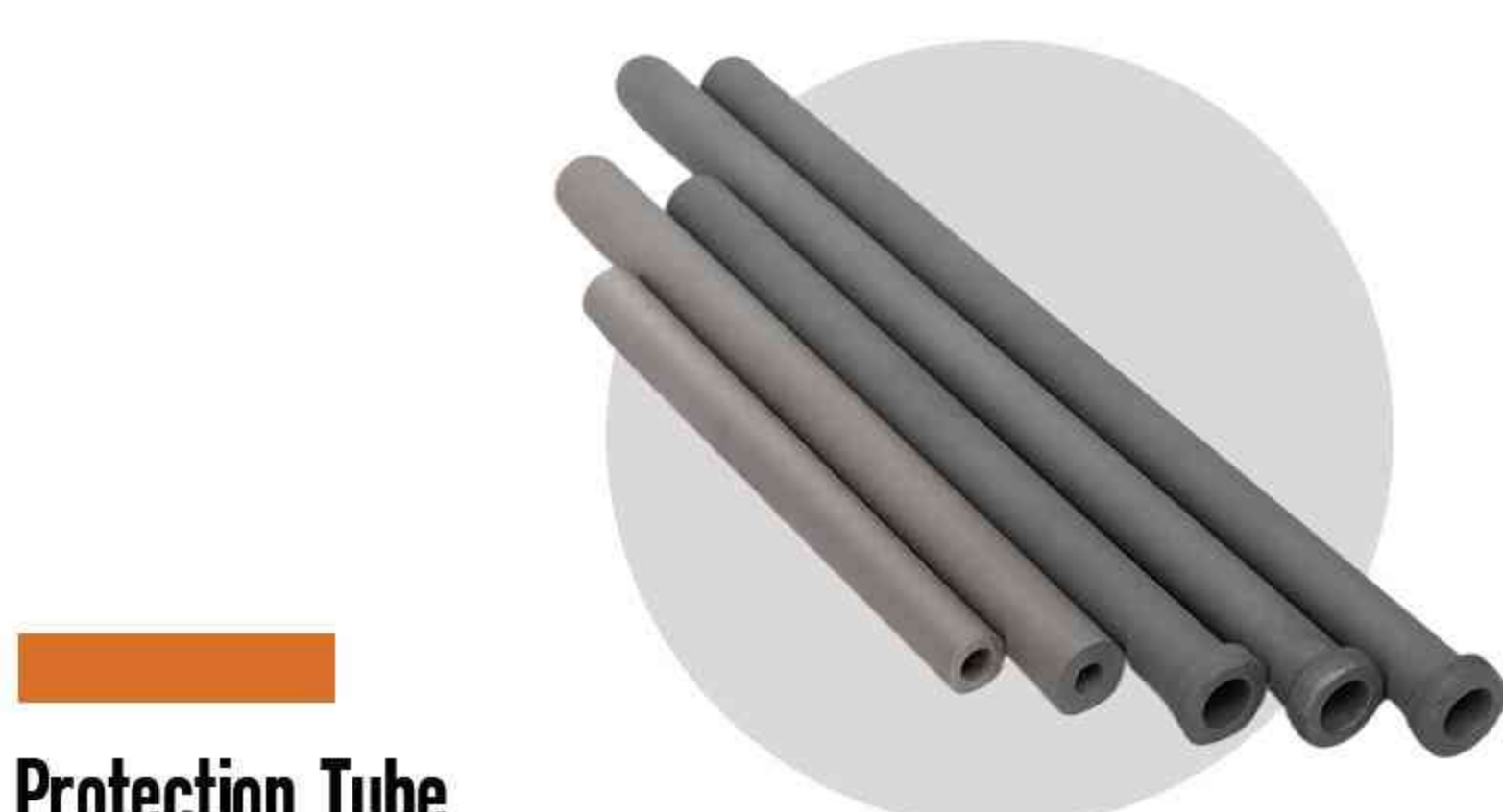
**Thermowell Tube**



**Protection Tube**



**Thermowell Tube**



**Protection Tube**

# Industries Served

## Insulation Industry

Cobalt alloy spinner discs for glass wool production is a typical application, spinner discs are one of the key components for the production of glass wool, the using temperature is around 1000°C. It help to expand the lifespan due to its excellent high temperature resistance and wear resistance. There will be 10,000 to 50,000 holes in each spinner depend on the dimensions. SYTOP supplied 6000-10000PCS spinners to the market every year.





**Spinner**



**Spinner**



**Spinner**



**Spinner**



**Spinner**



**Spinner**



**Spinner**



**Spinner**

# Industries Served

## Food Processing

We offers OEM components for homogenizer equipment in the food, cosmetics and drugs processing. To meet the wide variation in wear requirements across these industries, SYTOP offers full series cobalt alloy. Our parts offer significantly extended service life and process reliability in the most abrasive and corrosive homogenizer and feed extrusion processes.



**Valve Pilot**



**Valve Core**



**Valve Plunger**



**Ball**



**Valve Cage**



**Valve Cage**



**Valve Seat**



**Seat Ring**



## Industries Served

### Cu & Al Extruding

Cooper extrusion dies need to work at 800°C for a long time, the wearing in high temperature is serious. So it requests the dies with very good hot hardness to reduce the downtime and increase its life time, widely is used on profile copper or aluminum flat bars and rods extrusion. The surface will be shining and not easy to crack during the extrusion process.



**Extrusion Die**



**Extruder**



**Extrusion Die**



**Extruder**



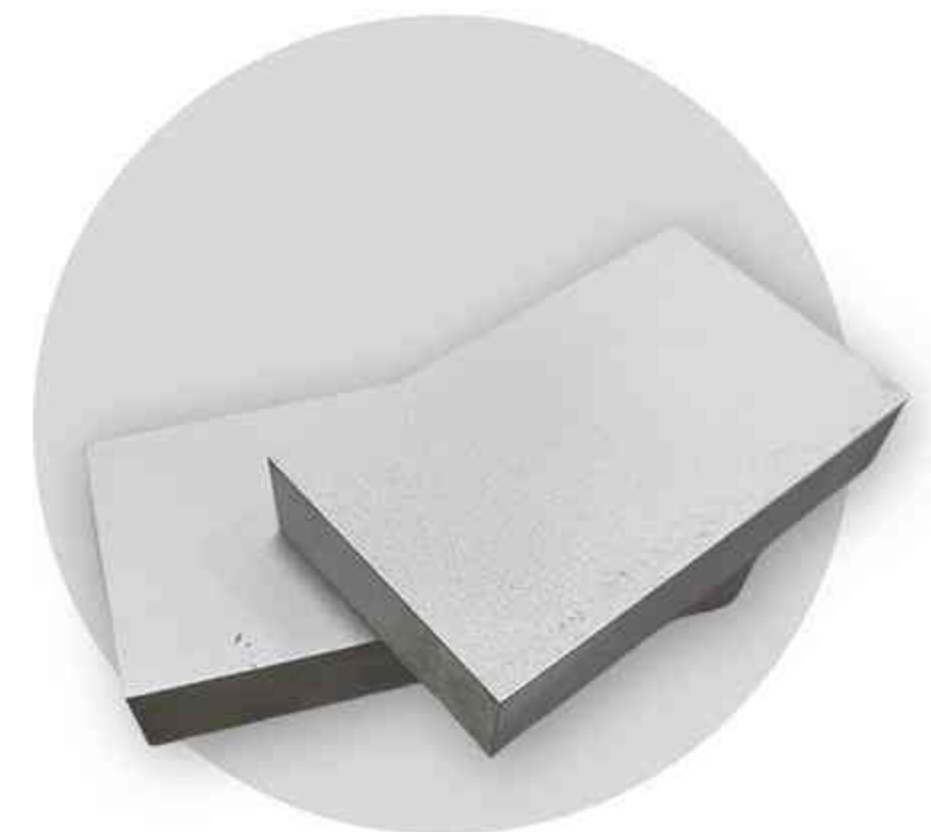
**Extrusion Die**



**Feed Plate**



**Extrusion Die**



**Extruder**



## Industries Served

### Paper & Pulp Industry

For many years, SYTOP has been providing cost-effective, wear-resistant solutions tailored to the unique demands of the Pulp and Paper Industry. In the paper manufacturing process, equipment and components are often exposed to slurry corrosion, erosion, and wear, placing higher demands on material performance. Cobalt-based alloys, with their exceptional resistance to fluid corrosion, erosion, and wear, provide enhanced protection for critical components in pulp making equipment. This helps reduce downtime for maintenance and repairs, ultimately improving production efficiency.



**Axe Sleeve**



**Valve Body**



**Discharge Port Liner**



**Bushing**



**Wearing Strip**



**Liner Bush**



**Sleeve**



**Bearing**



## Industries Served

### Extrusion Plastics

In recent years, cobalt-based alloys have been widely adopted in plastic extrusion processes, particularly for critical components such as screw barrels and other essential parts within the screw system. We provide customized barrel solutions and replacement programs for a range of OEM extruders, ensuring optimal performance and durability.

We also manufacture a full range of pelletizing knives for extruders. These knives are produced either based on our proprietary designs or customized to meet specific customer requirements. All knives are vacuum-brazed, ensuring tight tolerances and exceptional quality. Dimensional accuracy is meticulously verified during production and thoroughly documented in the final inspection to guarantee precision and reliability.



**Screw Pump**



**Pipe**



**Pelletizer Knife**



**Pipe**



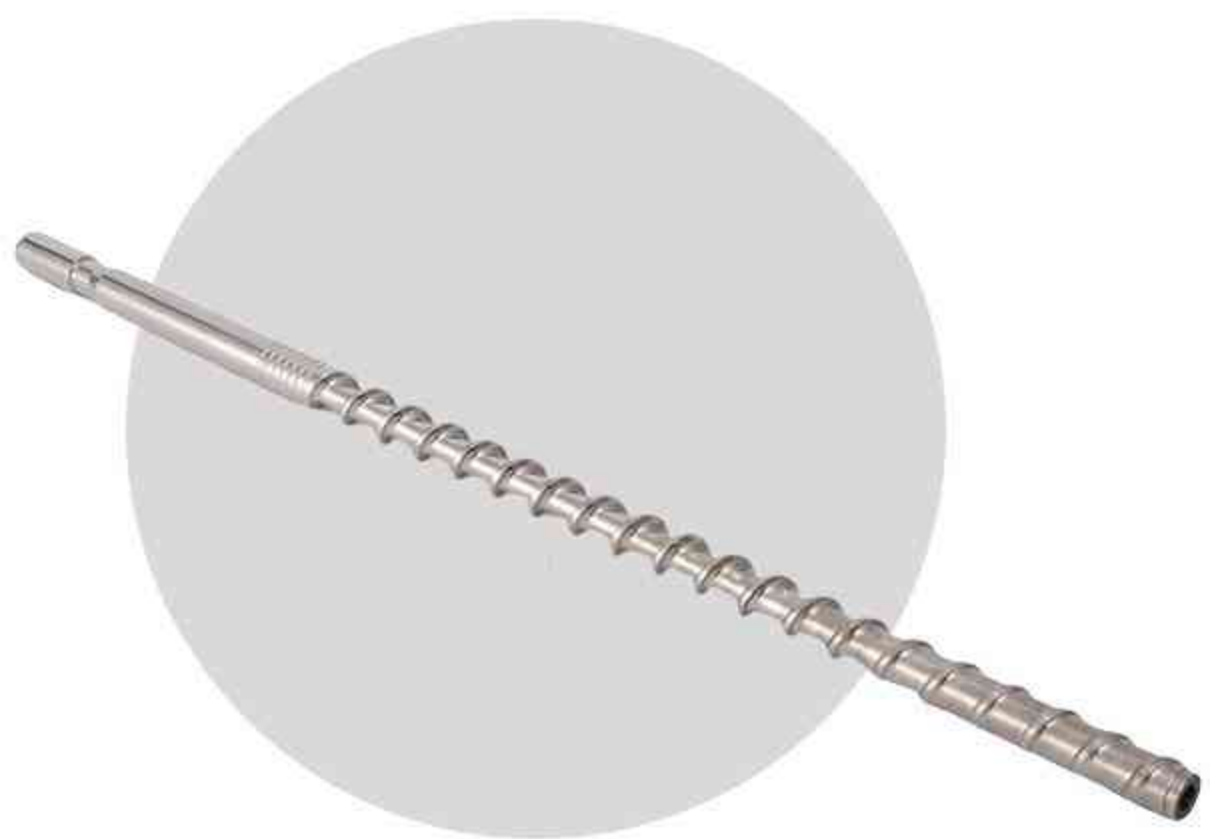
**Stem**



**Tip**



**Screw**



**Rods**



# Industries Served

## Other Fabricating Parts

SYTOP can deliver a broad range of solutions for general engineering applications. SYTOP provides comprehensive finish-machining capabilities, specializing in the machining of materials with exceptional wear and corrosion resistance. Our highly skilled engineers and team, backed by years of experience and advanced equipment allow us to manufacture components to precise specifications, ensuring the highest quality and performance. Even the small tips and the big bushings you will find satisfied solutions here. We are your valuable partners for the whole supply chain.



**Bulk**



**Alloy Block**



**Plate**



**Sheet**



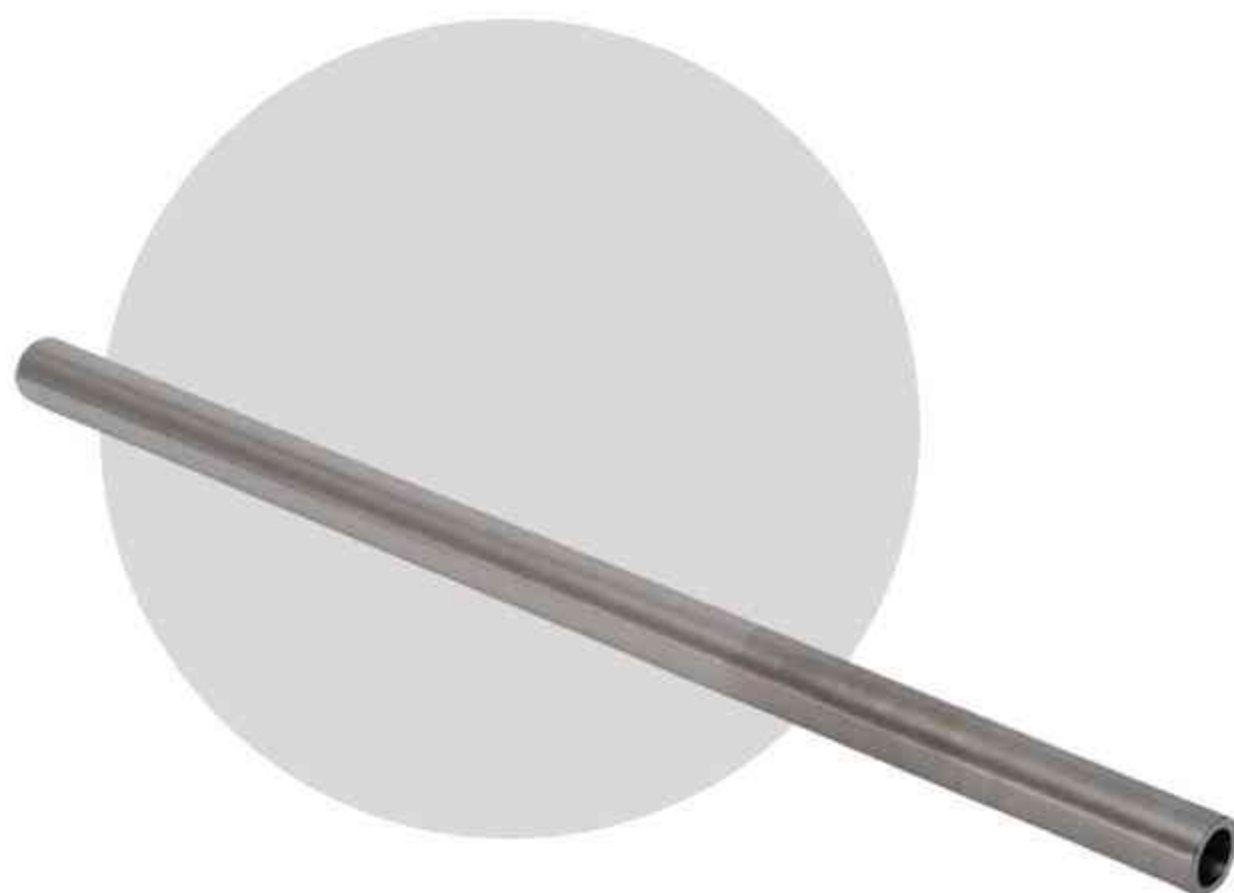
**Rods**



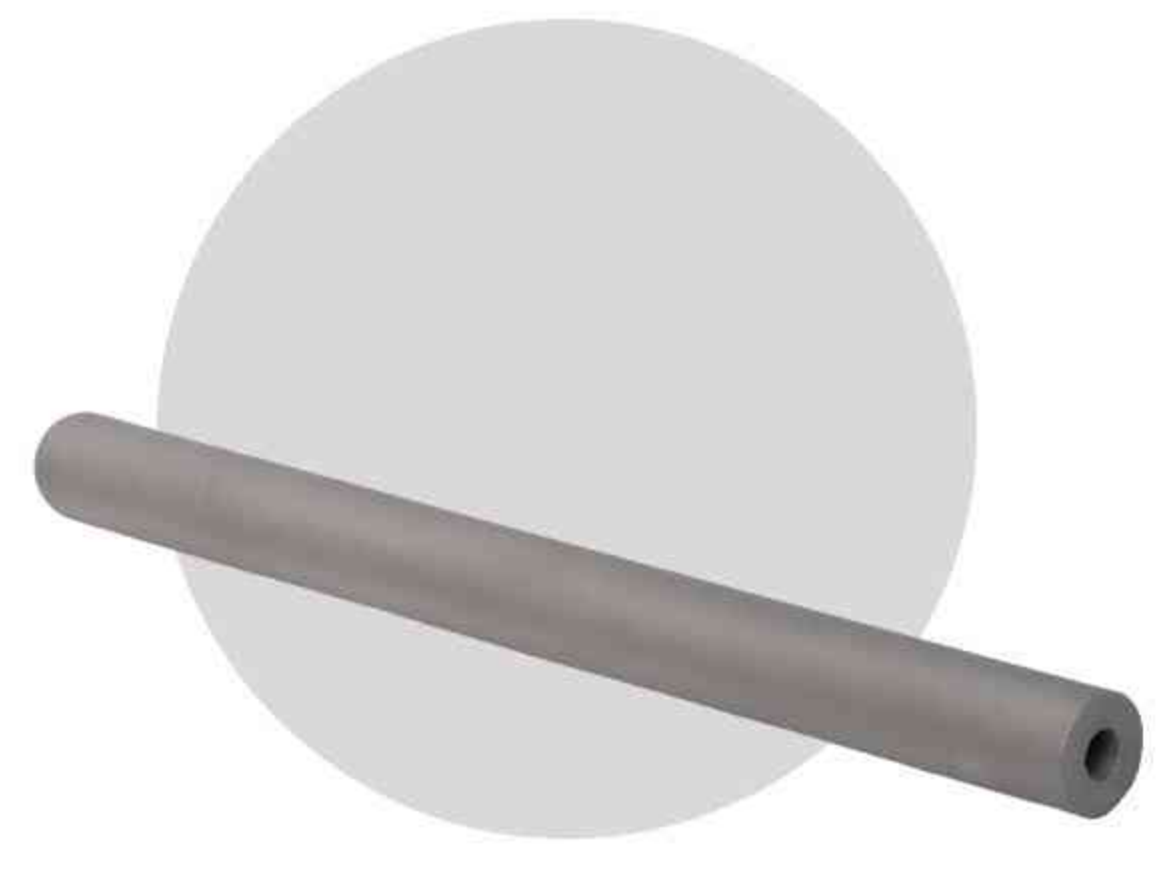
**Round Bar**



**Pipe**

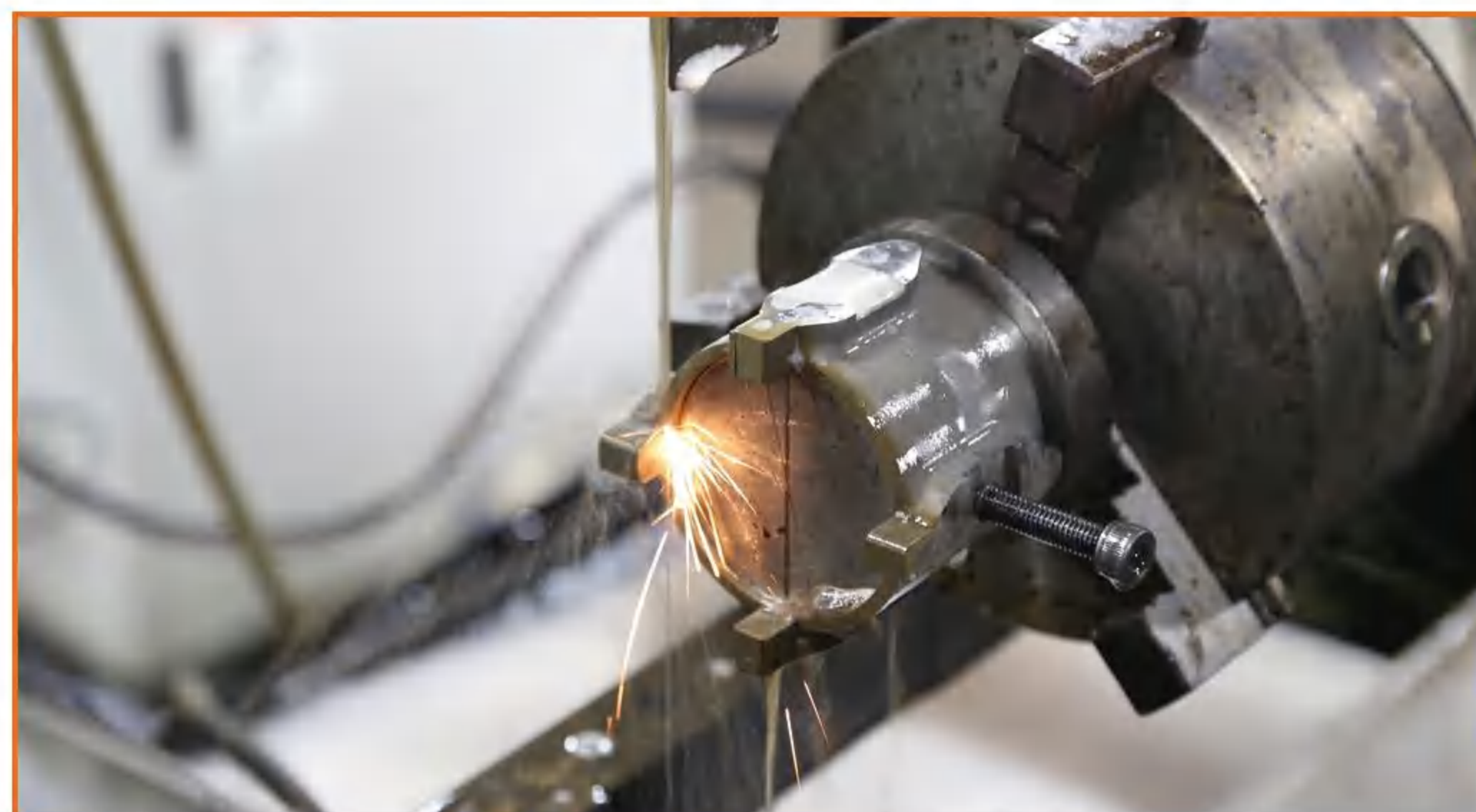
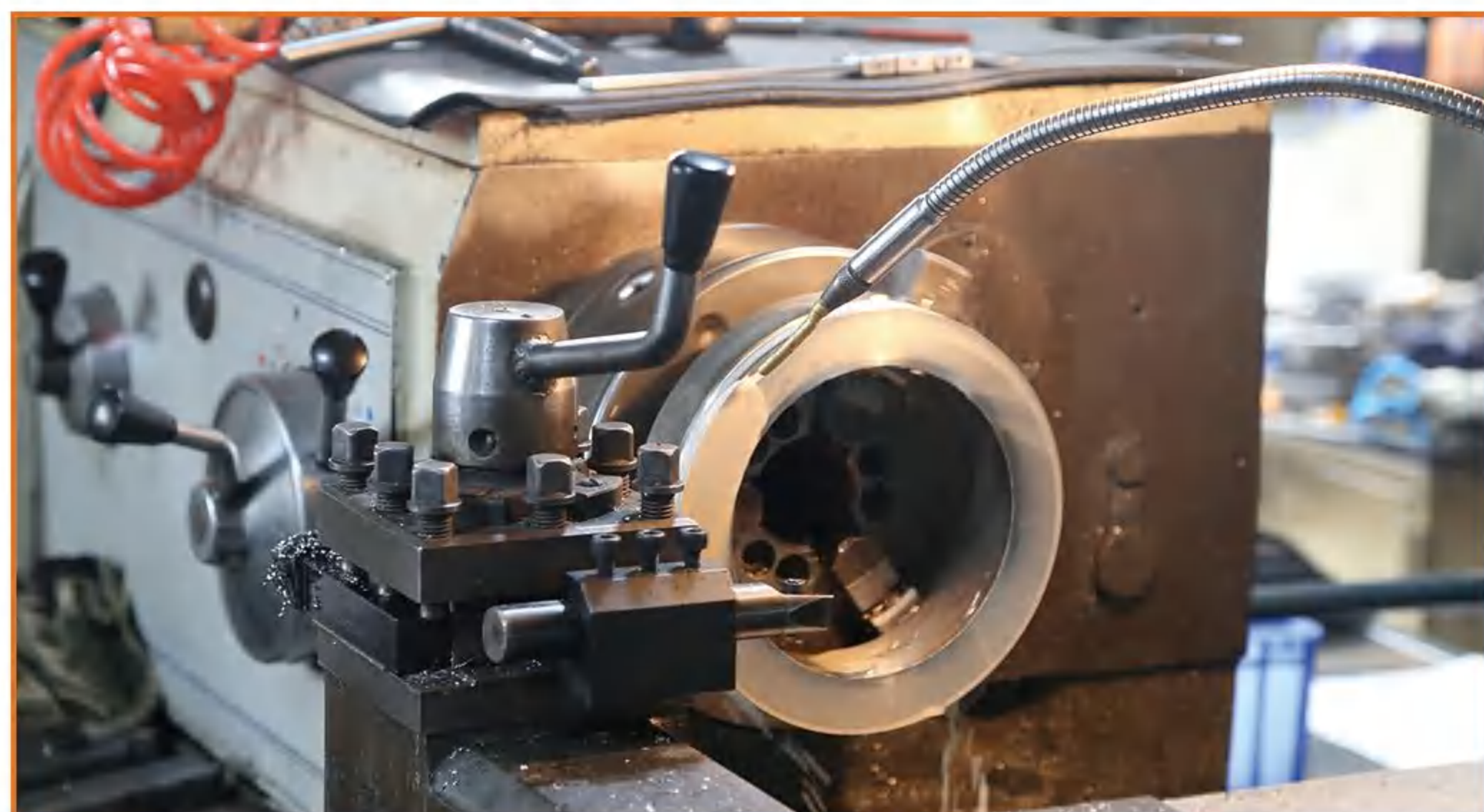


**Tube**



# Production Line & Inspection Equipment

SYTOP operates its own powder metallurgy factory, casting facility, continuous casting production line, forging and rolling production lines, and machining workshops. This comprehensive infrastructure covers the essential processes for cobalt-based alloy production. We are committed to meeting your high-precision product requirements. From material selection and structural design to product machining and assembly, we offer a one-stop solution to ensure exceptional quality and performance.





# Quality Certification

SYTOP Equipped with laboratory-grade testing equipment, we meet customer demands for both micro and macro material performance analysis. Additionally, our long-standing collaboration with the Institute of Metal Research, Chinese Academy of Sciences, further enhances our capabilities in material development and testing.



Carbon Analyzer



Oxygen Analyzer



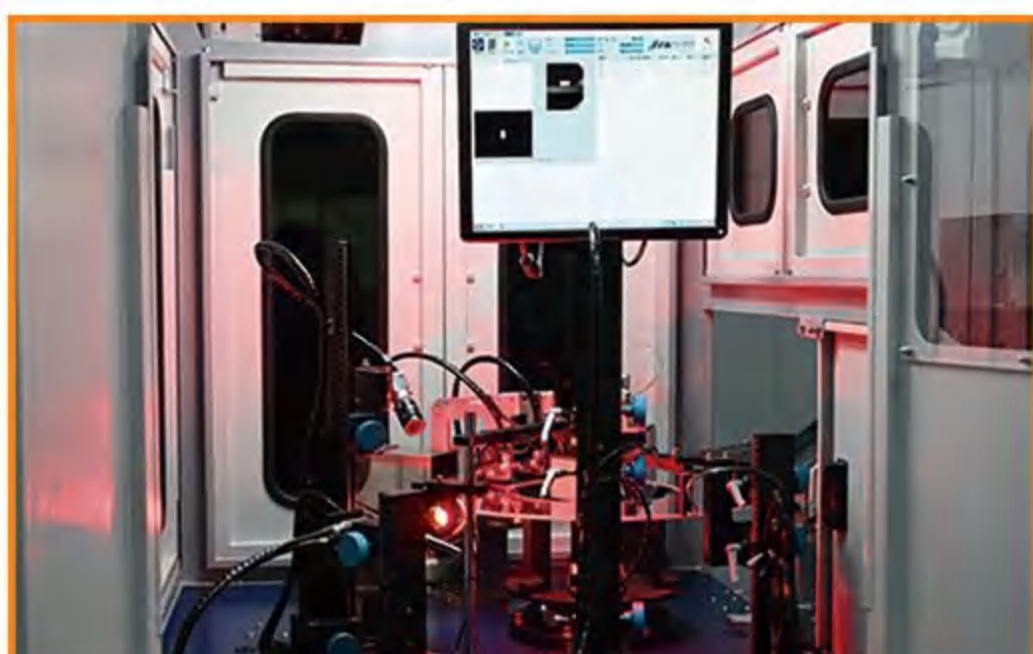
Average Particle Size Analyzer



Ultrasonic Tester



Laser Particle Size Analyzer



Optical Screening Machine



Density Meter



Coordinate Measuring Machine



Hand-held Spectrometer



Coaxiality Measuring Instrument



Thermal Expansion Coefficient Tester



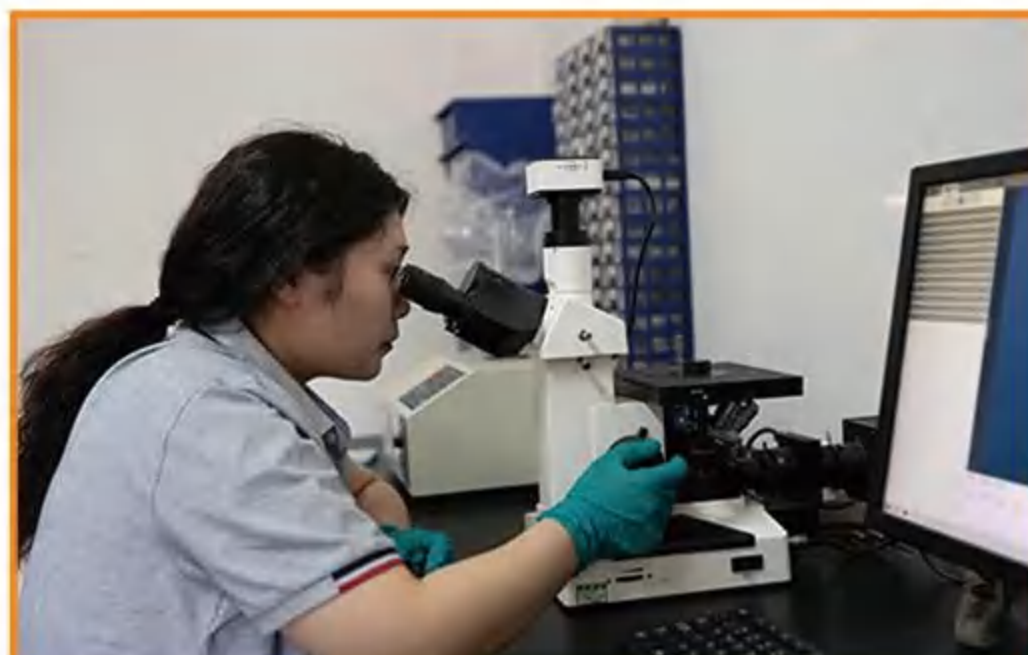
Rockwell Hardness Tester



Inside Micrometer



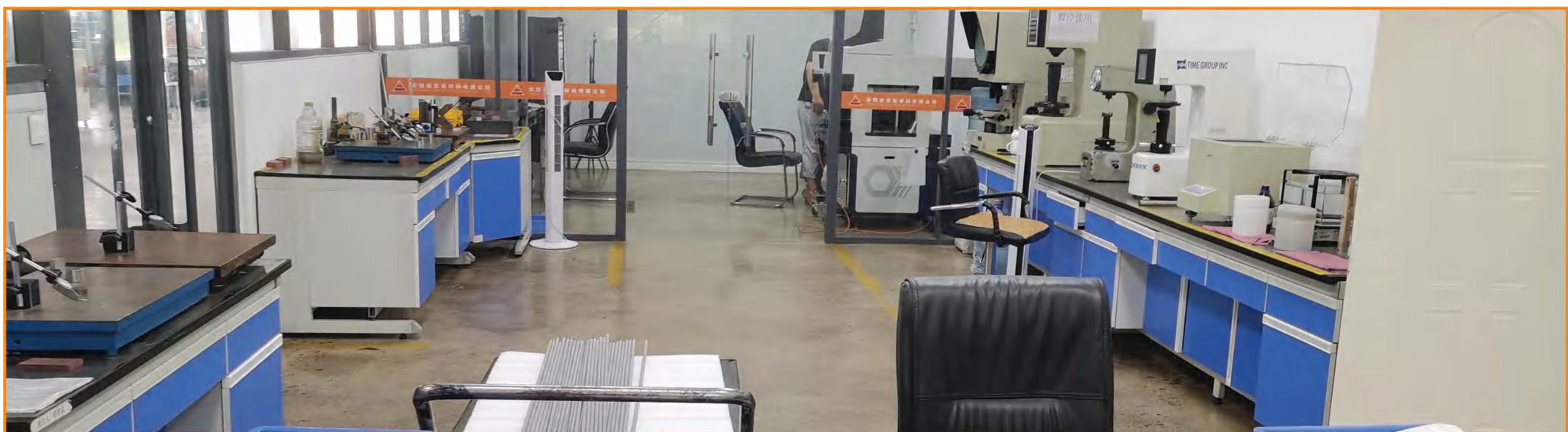
Surface Plate Micrometer



Metalloscope



Universal Testing Machine



## Certificate

Standard **ISO 9001:2015**  
Certificate Registr. No. 01 100 1933401

Certificate Holder: **Shenyang Top New Material Co., Ltd.**  
Unified Social Credit Code: 91210113720997777W  
Registration Address:  
No.35, Xingnong Road,  
Shenbei New District, Shenyang City,  
110061 Liaoning  
P.R. China  
Operation Address: same as above

Scope: **Manufacturing of Powder Metallurgical Material and Other Metal Material Parts**

Proof has been furnished by means of an audit that the requirements of ISO 9001:2015 are met.

Validity: The certificate is valid from 2024-08-29 until 2027-08-28. It remains valid subject to satisfactory surveillance audits. First certification 2019  
This certificate information can be searched on CNCA official website <http://www.cnca.gov.cn>

2024-05-17   
TÜV Rheinland Cert GmbH  
Am Grauen Stein · 51105 Köln

Authorized responsible office: TÜV Rheinland China Ltd., Room 301, 3F and Room 1203, 12F, Building 4, No.15, Ronghua South Road, Beijing Economic-Technological Development Area, Beijing (Yizhuang group in high-end industrial area of Beijing Pilot Free Trade Zone), 100176, P. R. China

www.tuv.com

## Certificate

Standard **IATF 16949:2016**  
(1st edition, 2016-10-01)  
Certificate Registr. No. 01 111 1933401  
IATF Certificate No. 0410808

Certificate Holder: **Shenyang Top New Material Co., Ltd.**  
No.35, Xingnong Road, Shenbei New District, Shenyang City,  
Liaoning Province 110061, P.R. China

Scope: **Manufacturing of Powder Metallurgical Material Parts for Exhaust System**  
  
Excluding Product Design

Proof has been furnished by means of an audit that the requirements of IATF 16949:2016 are met.

Validity: The certificate is valid from 2021-07-13 until 2024-07-12.

Release date: 2021-07-14

TÜV Rheinland Cert GmbH  
Am Grauen Stein · 51105 Köln  
Germany · NRW

2-IAO-QMC 01003 1/1

www.tuv.com

**邓白氏注册**  
D-U-N-S REGISTERED

**邓白氏注册® 认证企业**  
A D-U-N-S® REGISTERED® Company  
(2023.11 - 2025.11)

**沈阳拓普新材料有限公司**  
Shenyang Top New Material Co., Ltd

**邓白氏编码® 54-577-4093**  
D-U-N-S® NUMBER

邓白氏注册“服务是邓白氏公司在全球推广的企业注册与展示服务,此证书由邓白氏公司荣誉承颁。  
D-U-N-S® Registered® is a company credit verification and display solution provided by Dun & Bradstreet across the world.  
This certification is awarded by Shanghai Dun & Bradstreet Business Information Consulting Co., Ltd.

**CERTIFICATE OF CONFORMITY OF OCCUPATIONAL HEALTH AND SAFETY MANAGEMENT SYSTEM**  
NO: 08923S30502R0M

This is to certify that the Occupational Health and Safety Management system of **SHENYANG TOP NEW MATERIAL CO., LTD.**  
No. 35, Xingnong Road, Shenbei New District, Shenyang, Liaoning Province, China  
Unified Social Credit Code: 91210113720997777W Post Code: 110000

Occupational Health And Safety Management System Complies With:  
**GB/T45001-2020/ISO45001:2018 Standard**

Scope:  
**Occupational Health And Safety Management Activities Related To The Sites Involved The Manufacturing Of Powder Metallurgy Material Parts, Metal Material Parts**

**Date of issue: 2023-4-3 Expiry date: 2026-4-2**  
Holding this certificate organizations receive annual surveillance audits qualified, And administrative license valid state regulations

Approval of the first surveillance audit Zhongshui Brilliant Certification Co., Ltd.	Approval of the second surveillance audit Zhongshui Brilliant Certification Co., Ltd.	Approval of the third surveillance audit Zhongshui Brilliant Certification Co., Ltd.
---	--	---

中国认可  
国际互认  
管理体系  
MANAGEMENT SYSTEM  
CNAS C089-M

Representative of The Company  
The Certificate Information Can Be Inquired At <http://www.cnca.gov.cn> Or <http://www.zsbc.net>  
Tel:010-58672798 Add: A-201, Euidun Center, No. 58, East Third Ring South Road, Chaoyang District, Beijing



## **SHENYANG TOP NEW MATERIAL CO., LTD**

No. 35, Xingnong Road, Shenbei New District, Shenyang 110164 China

**Cobalt Alloy Manufacturer Since 1996**



+86-24-22902706



sytop@vip.163.com



[www.sytopalloy.com](http://www.sytopalloy.com)